



Ink-jet Printer

ALT360HP

MANUAL

SHANGHAI YUCHANG INDUSTRIAL CO., LIMITED

Table of contents

Declare	-----	2
Safety Instruction	-----	3
Packing List	-----	4
Technical Data	-----	5
Environment/Electrical Requirement	-----	6
Install & Test	-----	7
	-----	8
Switch On/Off	-----	9
Operation	-----	
<The main screen>	-----	10
<system>	-----	
1 "Print head management"	-----	11
2. "Authority"	-----	12
3 "disk"	-----	13
4.Ink look	-----	13
5.Appearance	-----	13
6. System information	-----	13
7 "date time"	-----	14
8 "calibrate"	-----	14
<Parameter>	-----	18
<Print>	-----	19
<File Browse>	-----	20
<Edit>	-----	
Image file	-----	20
Create "bar code"	-----	21
Create "date/time/serial No./ shift group"	-----	22-25
Text&Text Feature	-----	26
Module operation	-----	27-28

Declare

- Please read the manual seriously before running machine. Any mistake or damage caused by user's incorrect operation, shall be not on our responsibility.
- In any circumstances, the ink-jet printer shall uses the accessories and consumables (include inks & cleaner) approved by our company. Disassemble machine without our agreement is strictly prohibit.
- The machine we produced which includes appearance, structure, hardware and software, has already got patent. Any piracy shall bears the legal liability.
- Our company reserves the right of final interpretation. If you have any questions, please feel free to contact us.
- Our company reserves the right of update at any moment, and unnecessary to notify the users.
- Copyright reserved by CYCJET. Any unauthorized reproduction, articles picked or other non-approved usages shall bears the legal liability. *

NOTE:

After 5 minutes non-use, it'll turn on blank screen saver automatically.

Please click or slide the screen with your figure to access.

Safety Instructions

Personal Safety

- Some inks & cleaners are harmful, please installing & running machine in well ventilated conditions.
- Some inks & cleaners are flammable, keep away from all sources of heat and ignition. Fire-extinguisher shall be equipped with nearby the machine.
- Wear safety glasses, gloves and masks when using inks & cleaners.
- In the condition of inhalation and eye contact, please flush thoroughly with water and seek medical aid immediately.
- Turn the power off before maintenance.
- Forbid to disassemble machine without our technician's instruction. The ink-jet printer must be properly grounded. When connecting electricity, the cabinet is powered with high voltage to risk life.
- Only trained technicians are authorized to carry out installation, maintenance or repair.

Machine Safety

- Loading Requirement
 - 1、 Ink-jet printer shall be packaged in standard container which filled with anti-vibration materials.
 - 2、 Purge the inside and outside of print head and plug up the ink inlet. The print head shall be covered by cap and packed by anti-vibration film to prevent from scratch.
 - 3、 Just left an empty cartridge in Ink system before loading.
- The warranty claims will not be accepted in the following situations:
 - 1、 Print head or inks system damages caused by using unauthorized inks and cleaners.
 - 2、 Print head or inks system damages caused by replacing different types of consumable randomly. Such as replaced oil-base inks into solvent-base inks, the two types of ink will cause chemical reaction to damage machine.
 - 3、 Damages caused by running in unsuitable environments or electrical requirements.
 - 4、 Damages caused by non-approved disassembling and assembling.
 - 5、 The permanent damages caused by not performing schedules maintenance, or print head scratching.
 - 6、 Damages caused by incorrect operation of non-approved people .
 - 7、 Damages caused by the Force Majeure.

Environmental Protection

Dispose of the waste inks & cleaners shall be in accordance with Local Authority Regulation. The wastes are not allowed into the sewer system.

Packing List

Name	Quantity
Handle Printer	1 PC
Charger	1 PC
U disk with editing software	1 PC
Manual	1 Copy

Technical Data

- System: 32-bit high-speed processor
- print head: 150height, 600dpi in vertical.
- print head number: 1
- Print height from 1mm to12.7mm by one print head
- Print Lines capability: Multi-lines(up to character height)
- Line speed capability: Max.60mt/min.
- Print Information: Date, Time, Character, Photo, Shift group, Serial number and bar code.
- Storage: 100 text messages together with one 256*150bitmap.
- Operation: Color touch screen with photo menu
 - Edit in screen
 - English input
 - Basic drawing function
 - Graphical function
 - Module design
 - Independence Printing Parameter
- Display:3.5 inch color touch screen
- Inks:Water-based Ink.
- Inks color: red, yellow, blue, green, black, white etc.
- Through USB interface to import single color bitmap. It can be operated by mouse.

Environment/Electrical Requirement

- Electrical requirement: AC, 110V±10% 50/60Hz,connect the ground cord.
- Max Power: 15W (average < 8W)
- Temperature: 5-40°C
- Humidity: 10-90%(non-condensing)
- Electromagnetic interference: far away from electromagnetic radiation zone

Install & Test

Only trained technicians are authorized to carry out installation.

Before install, confirm the machine was stay in a solid & smooth place without electromagnetic radiation. Installed as stipulated in manufacturer's specification, do not change the relative position of ink system and print head. Any special requirements, please consult the manufacturer and supplier directly.

Ink-jet Printer Installation & Testing



Pic1

- 1、 Unpacking: open the package and move out Handle jet printer.
- 2、 Switch On: Press the Red power switch, wait for 15 seconds to entering edit screen.
- 3、 Ink cartridge installation: Insert the ink cartridge into ink-tube system in correct direction.
- 4、 Move off printhead cap, and then squeeze ink cartridge to drain out air and cleaner. Repeat squeezing several times for new machine.(more details see page24)
- 5、 Print:a) Click PRINTING key. b)Press the button of handlebar. c) move the Handle jet printer by wheels (ensure the wheels contact to product surface)
- 6、 If the screen cannot work when switch on, it may power off, please charge up the battery. When the Red light turns into Green, means complete charging. The charging time is nearly 3 hours each time.

Switch on/off

➤ **Switch on:**

Checked up the power connection status before switch on. After switch on, it will enter into the operation system within 15 seconds. Remove the print head cap and press PRINT key to start printing when using oil-based inks.

When using solvent-base inks, please purged print head and drained out the dry-inks by blotting-paper. After that, test the printing result by a blank paper.(more details see page24)

The procedure for using solvent-base inks: purge-squeeze-clean-test.

➤ **Switch off:**

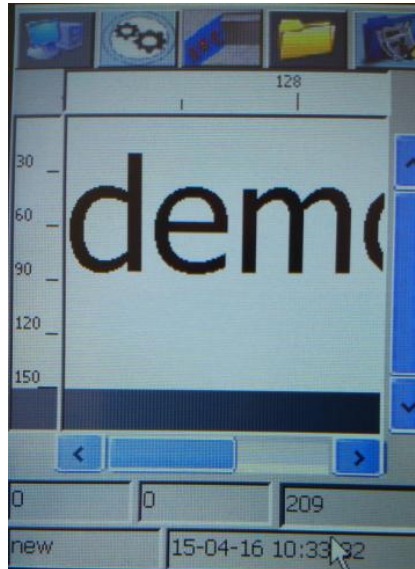
Press the power button off and cover up the print head cap.

Note: Before switch off, ensured the print head in normal condition.

Operation

➤ <The main screen>

Power on the printer, it will display <the main screen > as photo 2.



Pic 2

On the operator interface, you will clearly find five menu items : System



Parameter  , print  , File  , Edit 

Preview Area with scale is located in the middle of screen. 150 dots height *20000 dots width with graduated scale. what you edit in the screen is what can be printed out.

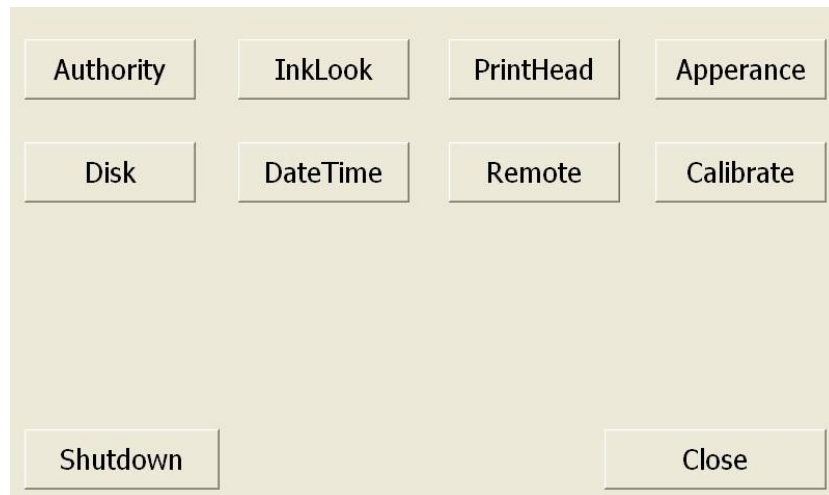
In the bottom of the screen is the counter. It can count the printing times.
Also you can find the file name of the printing file, date and time here.

➤ System

Click the button <system> opens a screen as photo3, which shows the following buttons:

“Authority” “InkLook” “print head” “Appearance” “Disk” “Date&time”
“Remote” “Calibrate” “shutdown” “close”

Operation



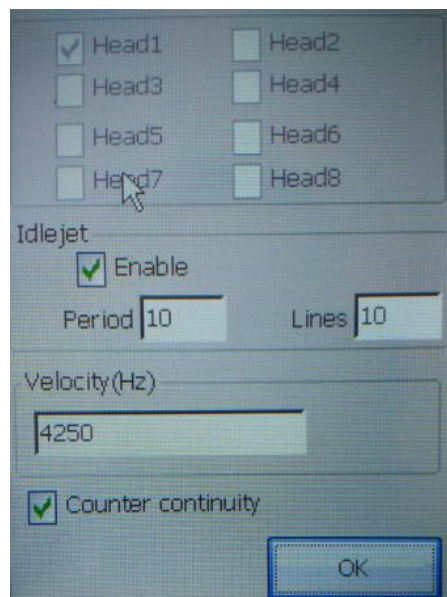
Pic3

1.print head management

Click this button will open the interface of print head management. You can set the value of idle-jet and the continual serial no on this page.

A.Idle-jet

If you choose [solvent](#) ink system, in order to prevent the ink on the surface of the print head becoming dry out which will cause illegible printing result you may need to start idle-jet printing function according to the chosen ink type, temperature,moisture and air flow rate to set the period and line for idle-jet printing. Recommend idle-jet printing [period](#) is 10 seconds and lines for idle-jet printing is 10. (if the air flow rate is fast or the temperature is high, the [lines](#) for idle-jet printing need to be 20 or more.)



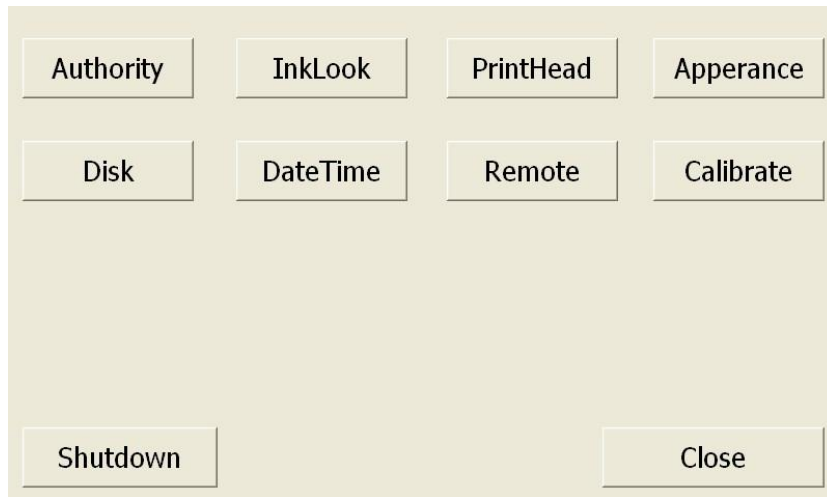
Pic 4

It is not necessary to use idle-jet printing in porous system. But if in the environment with heavy dust, use idle-jet can be used for dust-protection.

Note: **Do not change the velocity. The value must be 4250HZ.**

B. Continual number function

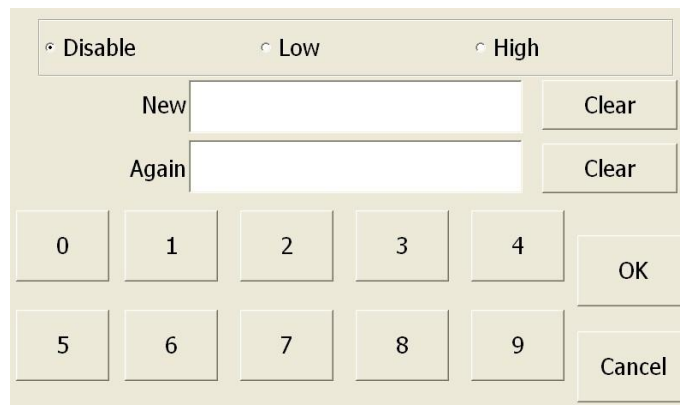
The continuous number will increase on each successive print activation no matter when power off has been done.



Pic 5

2. **“Authority”**

Click the button “Authority” opens a screen as shown. and then, click <OK> button of photo5 to open screen as photo 6.



Pic6

According to your requirement, two options is available if you need to set authority

Select “Disable” means no permission required.

Select “Low” comes to low degree permission

Low degree permission: Restrained only to editing function, need to input password to log in.

Select “High” comes to high degree permission

High degree permission: Restrained to 4 functions including System&Parameter&File&Edit, need to input password to log in.

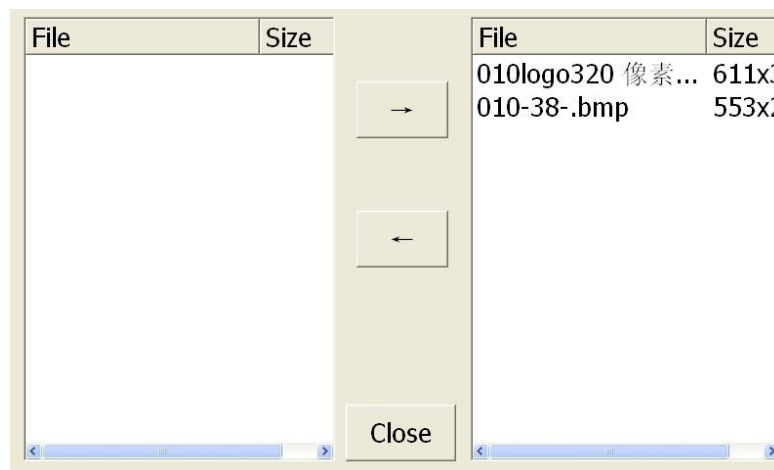
Authorized administrator can revise the password.

Authorized administrator can maintain the devise properly in order to avoid the file be deleted Or revised by others and prevent from parameter error& time error. Also printing error caused by choosing wrong file can be avoided.

Final value should be confirmed with button “OK” or the reference value is returned by button “Cancel” or “Close” .

3. **“Disk”**

Insert a storage disk into USB interface and click the button “Load” opens a screen as photo5.



Pic 7

It just can upload and download a bmp format single color files from a storage disk through USB interface.

Click the required file from the left side of screen, and click an arrow <rightwards> in the middle part. When the required file shows in the right side of screen means download successful.

4. Ink Look (Ink usage information)

Click the button “Ink Look” , it shows the ink information as following:

Current State	
Current Ink	0
Residual Frames	12500000000
Ink Info	
SN	0123456789ABCDEF
Residual Ink	12500000000
<input type="button" value="OK"/> <input type="button" value="Cancel"/>	

Pic 8

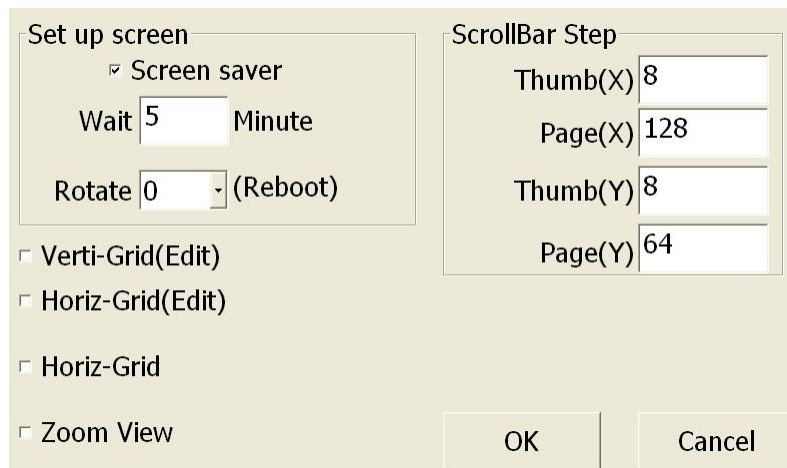
< Current ink> - the ink dot numbers required of the current printing file.

<Residual Frames> - number of prints for specified current printing files by 10pcs of ink cartridge

Note: Use residual frames figure and divided by 10. This will then represent the number of prints The cartridge can print of the specified print currently printing..

5. Appearance

Click the button “Appearance” opens a screen as shown.



Pic 9

You can set the length of screen saver and the screen display format.

6. Date&time

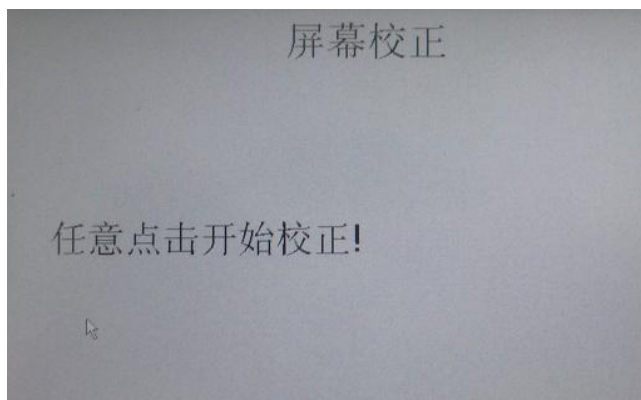


Pic 10

You can adjust time and date when click “date&time” button. Final value should be confirmed with button <setting> or back by button <cancel>.

8. “Calibrate”

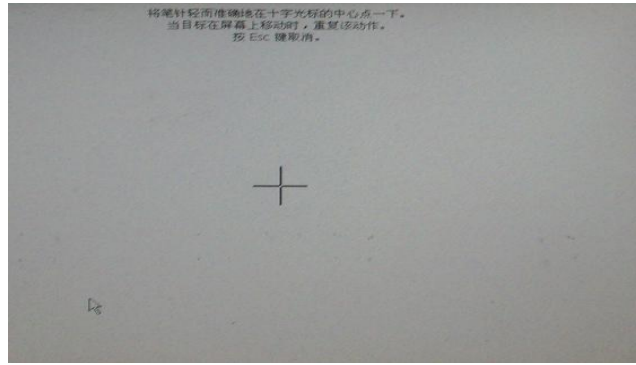
Click the button<Calibrate> to open screen as shown.



Pic 11-1




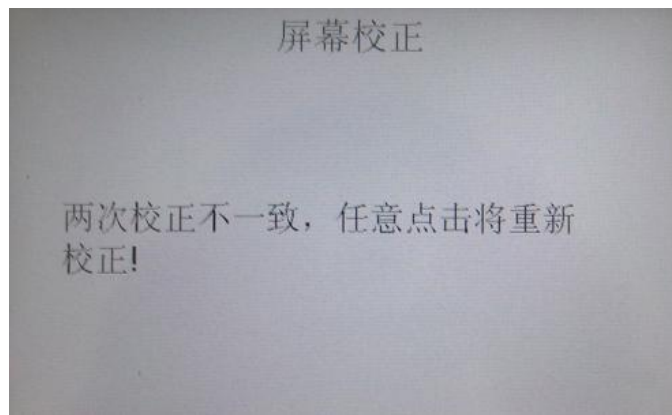
If the keypad is not alignment, select System on main interface and then click icon Calibrate for adjustment. Click on the screen as shown above to start calibrate.



Pic 11-2

Use nib to click the cross center as shown above. when target moving above the screen, please repeat it. After the first click, the latest calibration will be settled. If the second click is correct, please back to

System  interface and click OK to finish.

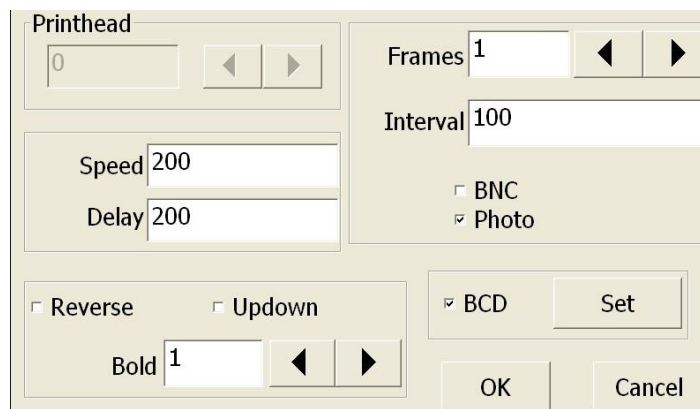


Pic 11-3

If the two times calibration are different, it means failed. Please click again for a new calibration. [Return to home screen by pushing a cross button.](#)

Parameter

Enter parameter by pressing  in the home screen.



Pic 12

Change "Print speed ,print delay, print direction, horizon bold, quantity of files you want to print, interval of each file you choose to print and whether to operate with synchronizer.

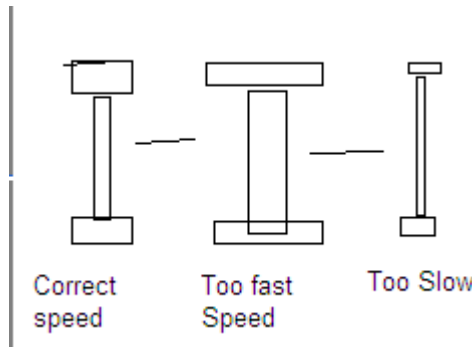
Print head parameter

1. Print Speed

Adjust print speed and print delay according to the speed of production line, the slower the print speed the shorter print delay is. After sensed by Photoelectric sensor, the print time will be reduced.-In about a few milliseconds.

Example:

Assuming fixed speed of object to be printed.

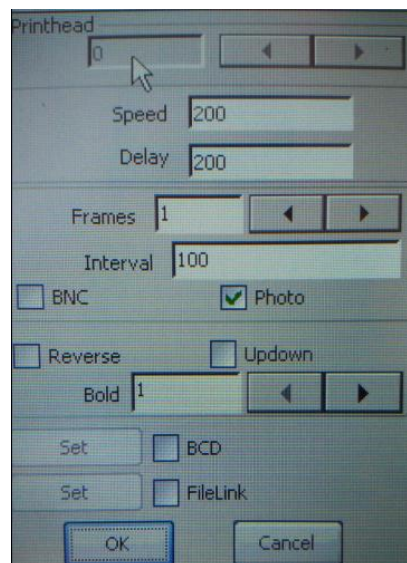


2. Bold

This function enable you to adjust the horizontal width of the print content that is to change the horizontal bold times, 2.1 Frames, 2.2 interval between each of the print images and 2.3 print direction of the print content.

2.1 Frames

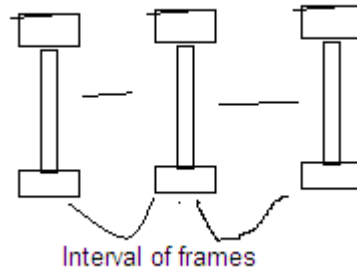
This setting allows consecutive printing of the same print. Note: Interval setting must be very low. For this function to operated.



Pic 13

2.2 Interval

This setting sets the interval distance between consecutive same prints.

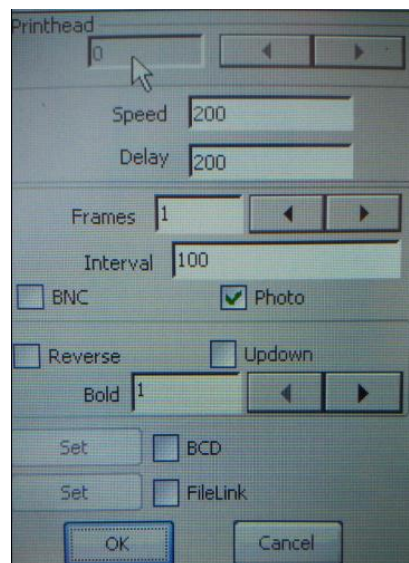


3. How to choose a photoelectric sensor

In order to print in the exact position and prevent from error of printing, you are recommended to choose a photoelectric sensor according to the size and color of the product and speed of production line

4. How to choose an encoder

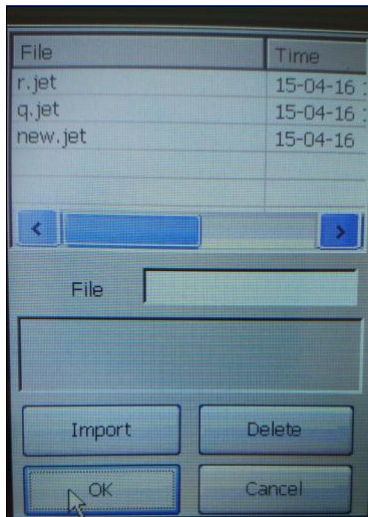
If you want to prevent from unstable length and definition of the text printed out due to unstable production line speed, you may need to choose an encoder. Also if you need to print in each fixed length (such as print per meter on the cable) or high identification rate is needed when printing you need to choose an encoder.



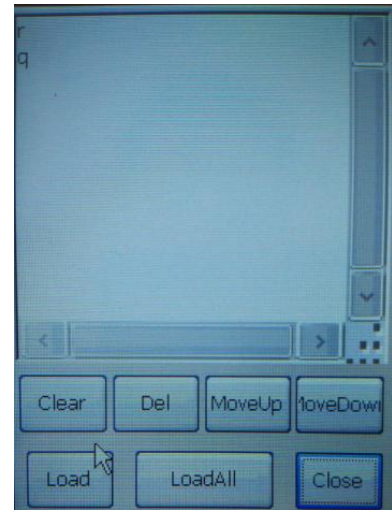
Pic14

5. File Link

In certain circumstance, there will be requirement for print several files together after sensed by the sensor. Select File link and then push the set button to proceed.

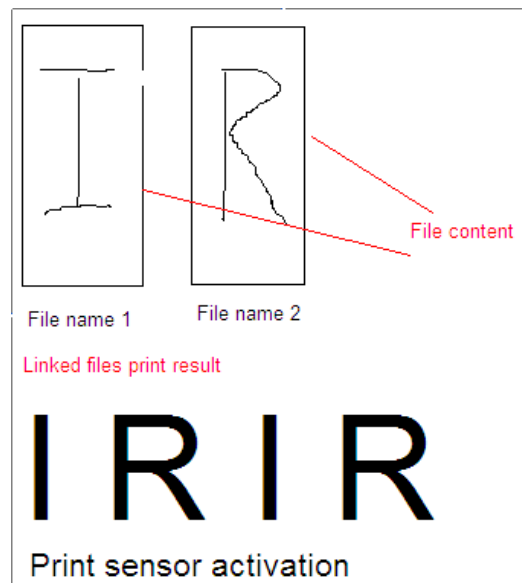


Pic15-1



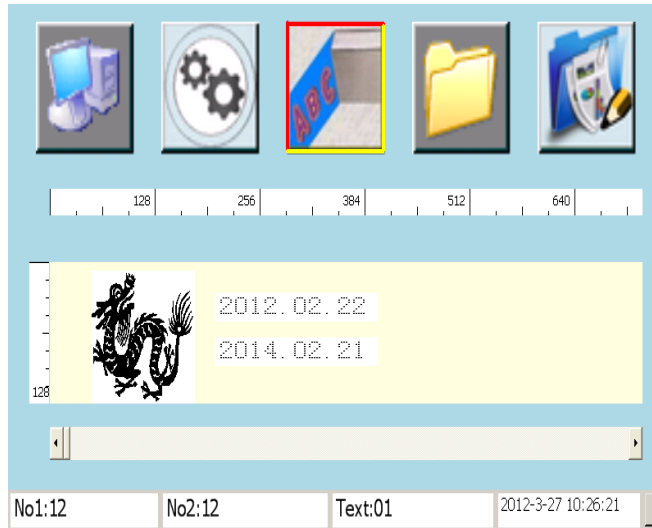
Pic 15-2

Use Load button to display possible files. Click on the file name to select the file. Then push OK. Repeat load button and select to load all the files want to print. After the list is produced press the close button. Select OK button to return to the running screen. File Link Example: If you link two files together. The printing will on consecutive. Print activation print Each consecutive file



Note: No editing is possible while printer is in printing mode.

If you want to print what you have edited, please click Print. The icon shows red and yellow frame, that means it is under print condition. If you choose sensor to print, the printer can print directly with what you have edited.



Pic16




File	Time
082.jet	13-01-06 8:47: 8
090.jet	13-01-06 8:33:29
095.jet	13-01-06 8:30:11
600.jet	13-01-06 8:20:44
601.jet	13-01-06 8:18:44
602.jet	13-01-06 8:12:58
604.jet	13-01-06 8: 5:46
605.jet	13-01-06 7:53:36
010.jet	13-01-06 7:46:15
606.jet	13-01-06 7:41: 7

Preview

Import
Download
Delete
OK
Cancel

Pic 17

You can change the file you want to print here.


If you click  not under print status, you will see the dialog box as pic 15. Here you can check all your saved file and latest revised time of the file. Click the top part, you can change the order of the files. If you need to change the file you want to print, choose the file you want to print and then click



.Click








to delete the file you don't need, so that you can store new file with the spare

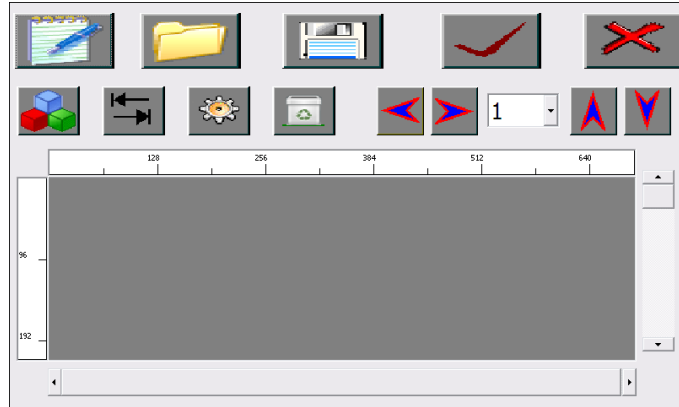
space. If you don't want to change the file that you want to print out, please click , then you will quit the interface.

Note: Deleted file can not be recovered, please be more cautions when deleting.

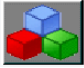
See photo3. After setting the parameter of Idle Jet Gap (interval of time) and Idle-Jet Column, the printer will spray out ink automatically at regular intervals

➤ **Edit** 

- “Edit”including: Text ; Image file ; Bar Code ; Date、
Time、 serial number、 shift group、 BMP generation ,New file creation  etc.





Pic 18

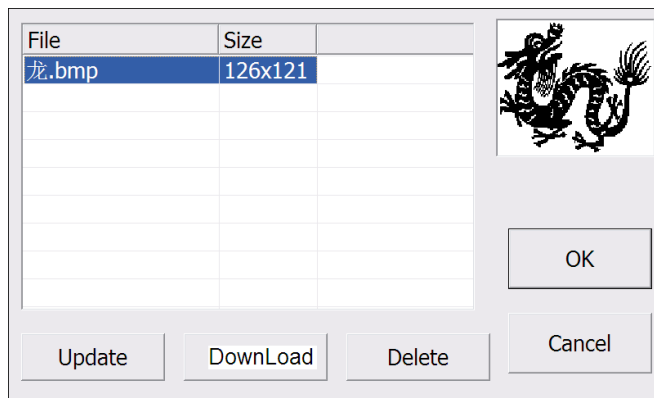
Click Edit icon  to enter Edit zone as picture below



Pic 19

1. Image file

If you want to print with a picture, please click "Image File"  firstly. Then choose an image file which is saved in the printer from the dialog box. Then click .



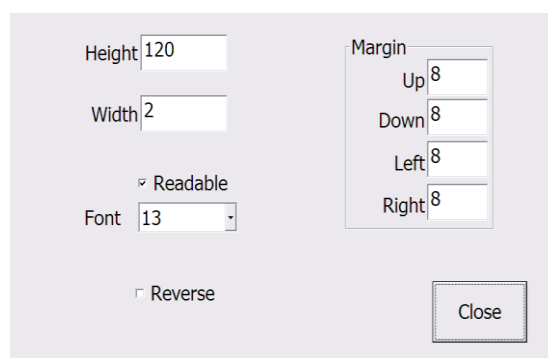
Pic 20

Note: Image file can only be single color BMP file. The bit map size should not over 160KB.



2. Bar Code



Pic 21-1



Pic 22-2

If you want to choose a bar code, choose , then choose the type of the bar code you want to print from the dialog box, you can preview the bar code you choose in the bottom of the dialog box. After choosing the bar code you want, click .

Bar code content: Various bar code value can be imputed.

Bar Code Type: Code EAN 8、Code EAN 13、Code ISBN 10、Code ISBN 13、Code UPC-A、Code UPC-E、Code 128、Code 128 GS1/UCC、Code 2/5 Interl、Code 2/5 Standard、Code 39、Code bar、Data matrix、PDF 417.

Data of Bar Code display: you can choose whether to display the data of the bar code according to your need.

Bar Code height: The quantity of dots consist of the height of the bar code.

Bar code width: The quantity of dots consist of the width of the bar code.

Left and right margin: quantity of the dots between bar code and the left or right edge.

(if there is data in the bottom, the margin should be large enough or the data can not be displayed completely)

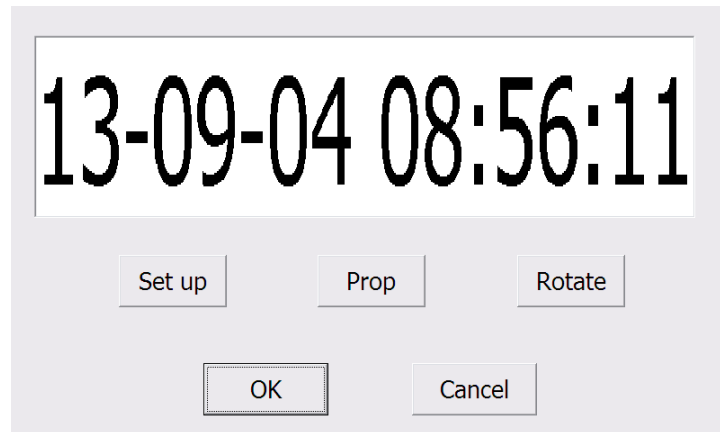
Up and down margin: quantity of the dots between bar code and the top or bottom edge

Note: verification code of the bar code value is automatically generated by system.

Operation

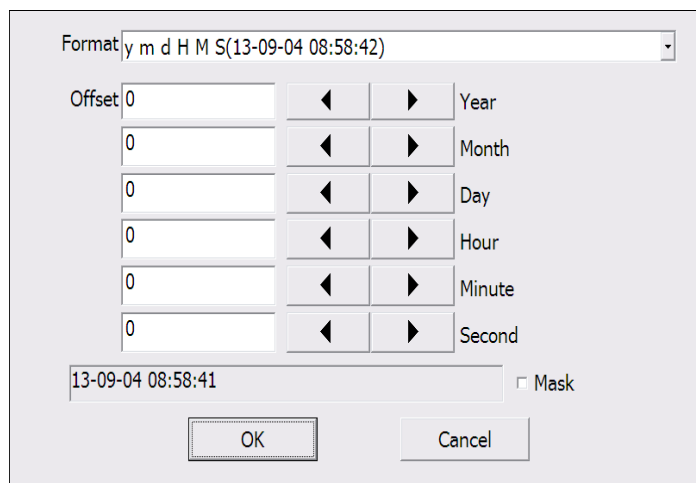
3.Date&Time

If you want to generate a new date&time,click ,then choose "date" in the dialog box.




Pic 23

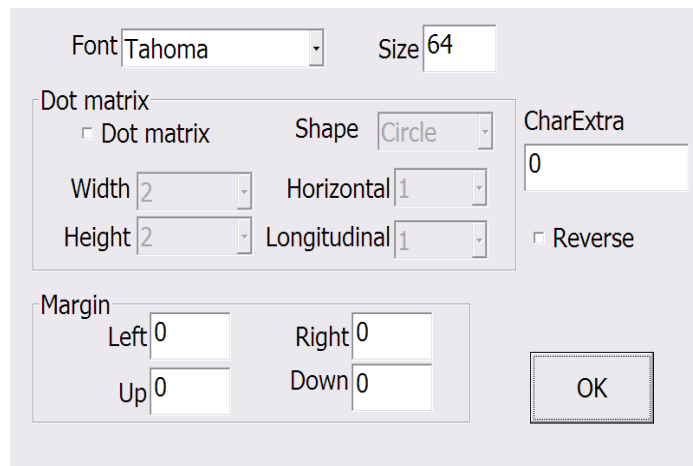
Click **Set Up** Icon to set property of Date, then select the date&time format in the "date setting" dialog box. then set the offset of the date&time on below dialogue box as your actual request. You can preview the date what you have edited in the preview area at the bottom of the dialog box, Click **OK** to confirm.



Pic 24

After setting the date&time formate, click "**Prop**" to enter the "**Prop**" dialog box (Pic 24), then change the font type and size in the "font" dialog box. finally come back to "Date" dialog box. click  for certain.

Operation





Pic 25

Date format: 18 different date formats can be chosen.

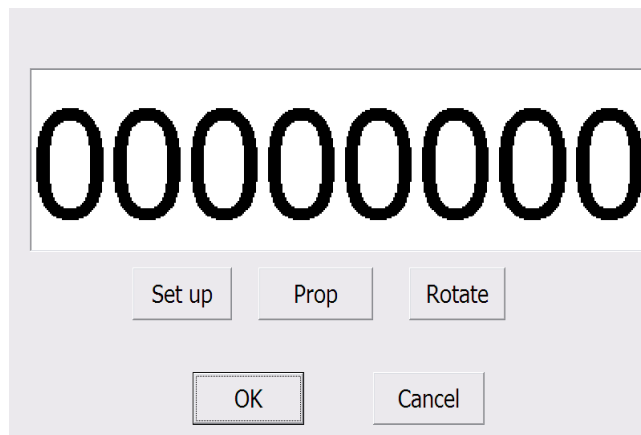
Date offset: Date offset is available date as your requirement such as period of validity 1, period of validity 2.

4. Serial No(Continuous number)

If you want to generate a Serial No,click , choose serial No in the dialog box. Then click **Set Up**


icon, select format of Serial No in the dialog box,click  for certain.

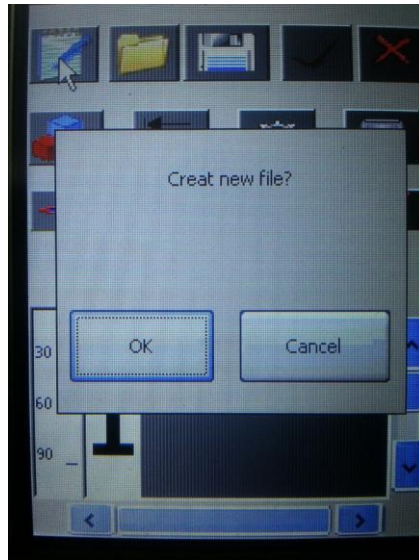
Click **Prop** icon, choose font in the dialog box, then you can edit the font of the serial no.




Pic 26

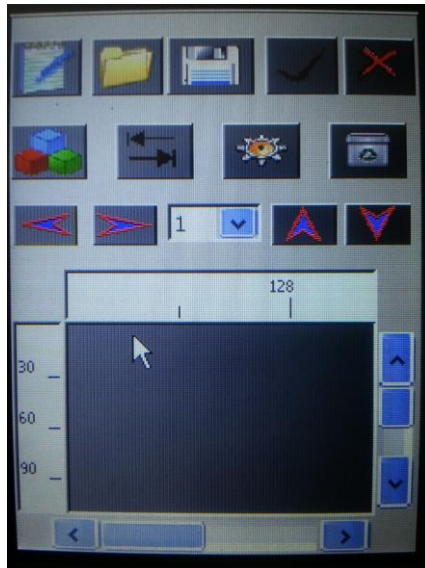
5. New File creation

Press or push button , you will now be presented with edit options and blank text screen



Pic 27

Enter edit zone by selecting  now make your selection of file content by selecting
An edit function

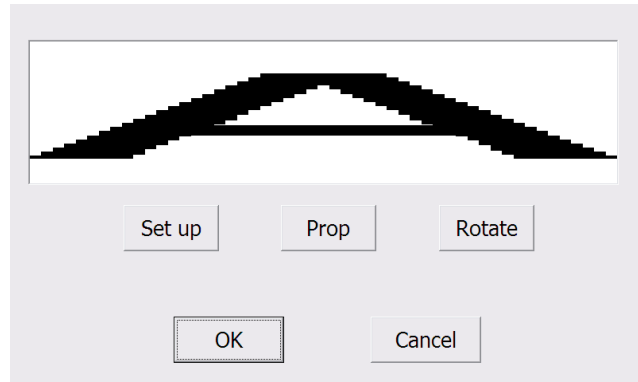


1. Image file
2. Bar code
3. Date&Time
4. Continuous Number
5. Shift group
6. Text


After editing select a new file name by editing the file name block or select OK button to update the present file name content.

Operation

5.Shift group



Pic 28

Click  if you want to generate shift group, then choose shift group in the dialog box. Click **"Set Up"** icon to set shift group, set the name and duration of the shift group in the "shift group" dialog box. Preview the shift group that you have edited in the preview area at the bottom of the dialog

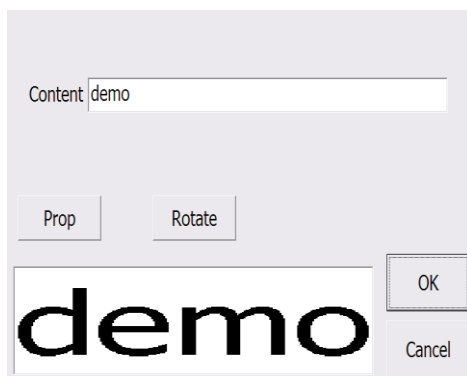
box.click  and back to "Serial No" interface, click **Prop** icon and then select the font of shift group.

Start time: set start time for the shift group.

Add shift group: Set the shift group name.

Delete shift group: Delete wrong shift group name or cancel this shift group.



6.Text







Pic 29-1



Pic 29-2

If you want to edit text,click , click the edit bar in the dialog box,then you will see the keyboard, click the edit bar again then you can begin to edit. Click  to shift the input method.

The **Backspace key** is not valid when editing. Click ,  then you can turn the page of the keyboard. After edit, click  to back to "Text dialogue", choose"Font" and change the font type

and font size, click , the text will be saved with original name. If it is a new file, you are recommended to input a new file name. Also you click File > Save As icon to copy the file.

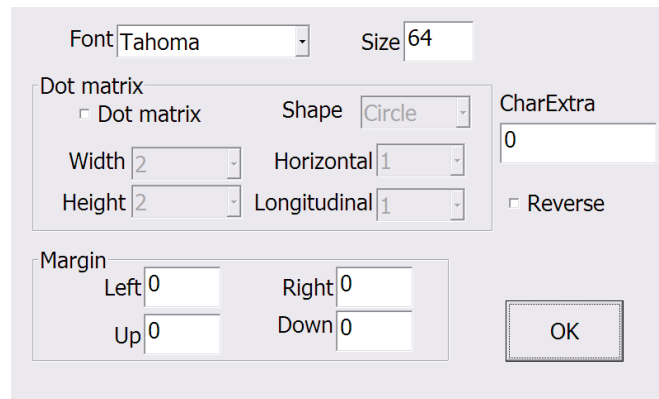
Operation

7.Text feature

After you finish text editing, you can change the parameter of the text. Choose "Font" and then you can adjust the font type& font size. If you want to print with dot matrix , please select "dot" and then set the dot width and dot height,horizontal distance of dots ,vertical distance of dots, dot matrix size and round dot. Preview what have edited in the preview area at the bottom of the screen. Then click



. If you want to generate an inverse printing result,click "invert" button and then click

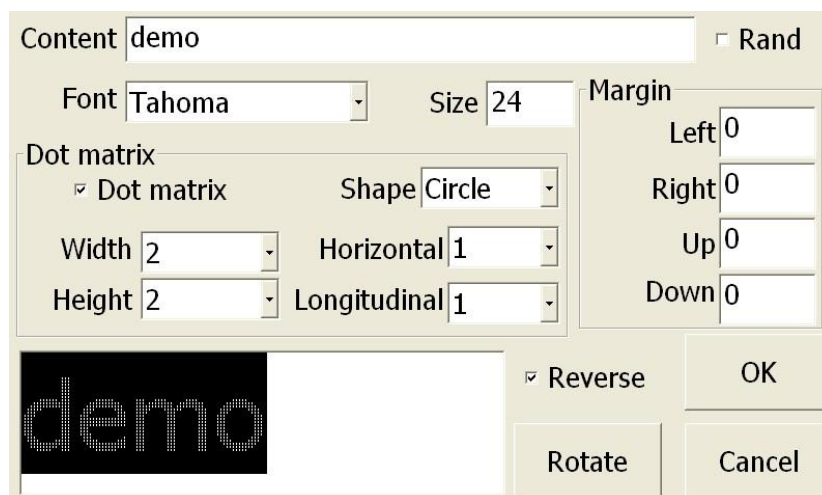


Pic 30

If you what you want to create a print performance like printing characters, please close the "dot matrix" firstly, then choose the "character" and set the character that you want to print.

Note: The "Text" setting can form various text, which enable you to print with perfect printing quality and achieve anti-counterfeiting purpose.

If you need to create a negative print result, please click "revert" icon and confirm with button "OK".








Pic 31


Operation

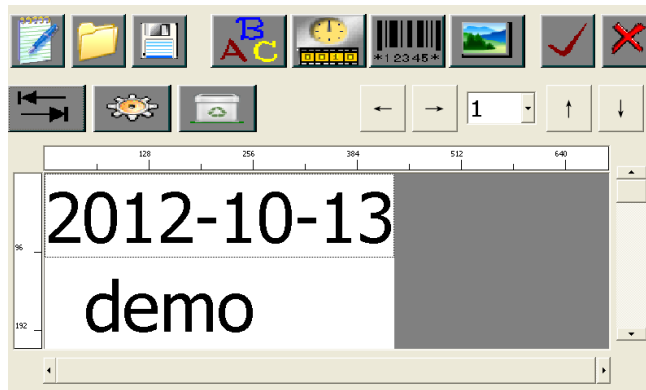
➤ Module operation

Module operation can work together with "Edit" to work out with perfect printing result.

5 main items : Select  , location adjustment  ,
Setting  , delete  , rotate  .

1. Select


Select the text you need firstly, then the text you are choosing will become blue. Then click  , you can choose the text according to the order of the text you have edited.

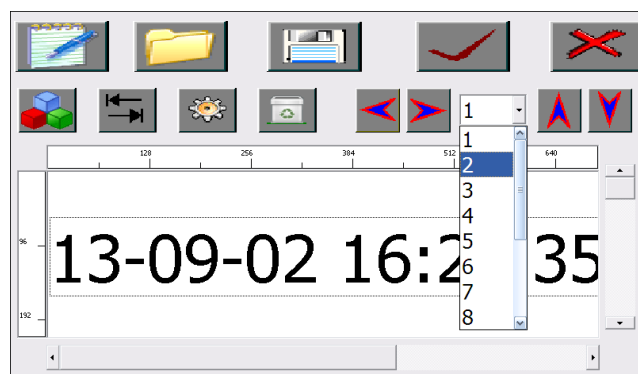


Pic 32

2. "location adjustment": choose the text that you want to print, and move the text to the approximately

location, then click "location adjustment" click  to adjust the location of the

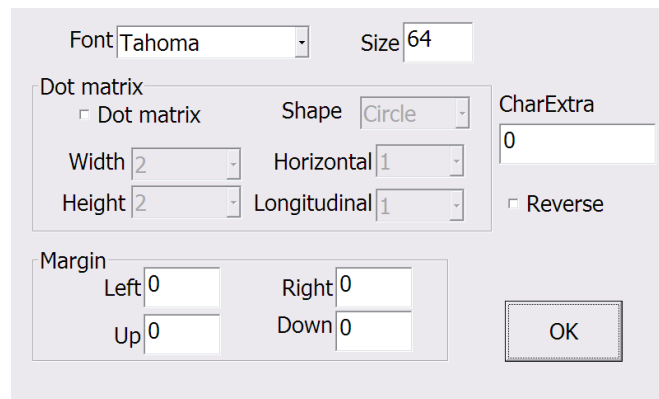
text. click  to change the extent of the movement.




Pic 33

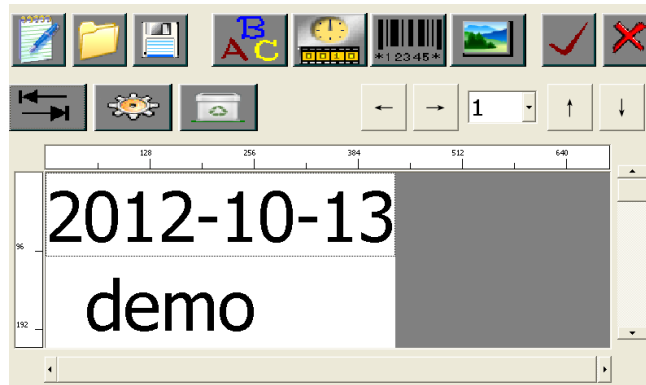
3. "Property": Choose the text you want to print firstly and then click  to change the property of the text.

Operation




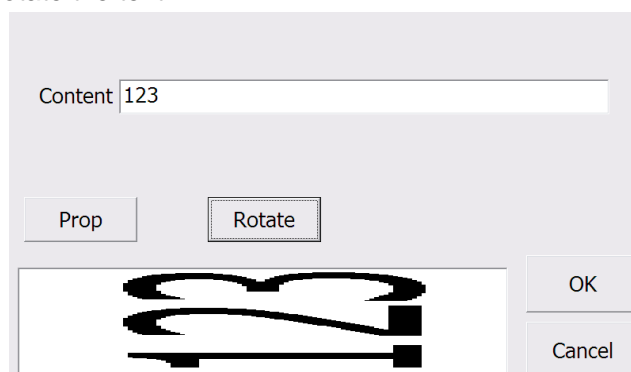
Pic 34

4. **“Delete”**: Choose the text you want to print firstly and then click  to delete the text.



Pic 29

5. **“Rotate”**: Choose the text you want to print firstly and then click , to 90 degree counterclockwise rotate the text



Pic 35

Note: Module operation can work together with "Edit" to create perfect printing quality and superior anti-counterfeiting performance.

Thanks for reading. If you have any questions or problems cannot solved, please consult supplier immediately!!!